

PARCC RESULTS:
SPRING 2015 AND SPRING 2016
ADMINISTRATIONS

NJASK SCIENCE RESULTS
SPRING 2016

ALLENDALE BOARD OF EDUCATION MEETING
OCTOBER 17, 2016

Measuring
College and
Career Readiness

NEW JERSEY'S STATEWIDE ASSESSMENT PROGRAM

- 2016 marks the 2nd administration of the Partnership for Assessment of Readiness for College and Careers (PARCC) and the first opportunity to compare year-to-year results as the following slides will show.
- Students took PARCC English Language Arts and Literacy Assessments (ELA/L) in grades 3 – 8.
- Students took PARCC Mathematics Assessments in grades 3 – 8.
- 8th grade Algebra students took PARCC Mathematics Assessments in Algebra 1.
- 8th grade students enrolled in a Geometry Course at the High School took a PARCC Mathematics Assessments in Geometry.
- 4th and 8th grade students took NJASK Science.

PARCC PERFORMANCE LEVELS

- Level 1: Not yet meeting grade-level expectations
- Level 2: Partially meeting grade-level expectations
- Level 3: Approaching grade-level expectations
- Level 4: Meeting grade-level expectations
- Level 5: Exceeding grade-level expectations

Comparison of New Jersey's Spring 2015 and Spring 2016 PARCC Administrations English Language Arts/Literacy

	Not Yet Meeting Expectations (Level 1)		Partially Meeting Expectations (Level 2)		Approaching Expectations (Level 3)		Meeting Expectations (Level 4)		Exceeding Expectations (Level 5)		% Change in Level 1 and Level 2	% Change in Level 4 and Level 5 (College and Career Ready)
	2015	2016	2015	2016	2015	2016	2015	2016	2015	2016		
Grade 3	15.1%	13.5%	17.8%	16.0%	23.7%	23.0%	38.6%	41.3%	4.9%	6.2%	↓ 3.4%	↑ 4.1%
Grade 4	7.8%	8.2%	14.5%	13.5%	26.6%	24.8%	39.4%	40.8%	11.7%	12.7%	↓ 0.6%	↑ 2.4%
Grade 5	7.2%	6.7%	15.1%	14.7%	26.1%	25.3%	45.1%	46.4%	6.4%	6.9%	↓ 0.9%	↑ 1.7%
Grade 6	7.9%	7.5%	15.5%	14.1%	27.8%	26.2%	39.7%	41.3%	9.1%	11.0%	↓ 1.9%	↑ 3.5%
Grade 7	10.8%	9.5%	14.5%	12.5%	23.1%	21.6%	33.9%	35.6%	17.7%	20.7%	↓ 3.3%	↑ 4.7%
Grade 8	11.5%	10.1%	14.6%	13.0%	22.3%	21.7%	39.1%	40.7%	12.5%	14.5%	↓ 3.0%	↑ 3.6%

Comparison of New Jersey's Spring 2015 and Spring 2016 PARCC Administrations Mathematics

	Not Yet Meeting Expectations (Level 1)		Partially Meeting Expectations (Level 2)		Approaching Expectations (Level 3)		Meeting Expectations (Level 4)		Exceeding Expectations (Level 5)		% Change in Level 1 and Level 2	% Change in Level 4 and Level 5 (College and Career Ready)
	2015	2016	2015	2016	2015	2016	2015	2016	2015	2016		
Grade 3	8.3%	8.1%	18.5%	15.9%	28.3%	24.3%	36.9%	39.0%	8.0%	12.7%	↓ 2.8%	↑ 6.8%
Grade 4	7.2%	8.0%	21.9%	18.6%	30.3%	26.8%	36.3%	41.2%	4.3%	5.4%	↓ 2.5%	↑ 5.9%
Grade 5	6.1%	6.2%	20.7%	18.3%	32.1%	28.2%	34.9%	38.4%	6.1%	8.8%	↓ 2.3%	↑ 6.2%
Grade 6	7.6%	8.9%	21.4%	19.1%	30.2%	29.1%	34.8%	35.6%	6.0%	7.3%	↓ 1.0%	↑ 2.2%
Grade 7	7.7%	9.0%	22.3%	20.1%	33.3%	32.3%	33.0%	33.5%	3.8%	5.2%	↓ 0.9%	↑ 1.9%
Grade 8*	21.9%	21.5%	26.2%	25.3%	28.4%	27.5%	23.0%	24.9%	0.5%	0.7%	↓ 1.3%	↑ 2.1%
Algebra I	13.8%	12.8%	25.3%	21.3%	25.0%	24.8%	32.9%	37.3%	3.1%	3.9%	↓ 5.0%	↑ 5.2%

*Approximately 30,000 New Jersey students in grade 8 participated in the PARCC Algebra I assessment. Thus, PARCC Math 8 outcomes are not representative of grade 8 performance as a whole.

Notes: Data shown is preliminary. Percentages may not total 100 due to rounding.

ALLENDALE'S
 SPRING 2015 AND SPRING 2016 PARCC ADMINISTRATIONS
 ENGLISH LANGUAGE ARTS/LITERACY

	Not Yet Meeting Expectations (Level 1)		Partially Meeting Expectations (Level 2)		Approaching Expectations (Level 3)		Meeting Expectations (Level 4)		Exceeding Expectations (Level 5)	
	2015	2016	2015	2016	2015	2016	2015	2016	2015	2016
Grade 3	1%	1.1%	7%	8.8%	11%	13.2%	61%	52.7%	20%	24.2%
Grade 4	0%	2.0%	0%	4.1%	9%	11.2%	55%	43.9%	36%	38.8%
Grade 5	2%	.9%	2%	.9%	16%	20.0%	48%	63.5%	32%	14.8%
Grade 6	0%	1.0%	7%	2.9%	24%	5.9%	56%	43.1%	13%	47.1%
Grade 7	2%	.9%	5%	5.4%	16%	10.7%	33%	42.9%	45%	40.2%
Grade 8	4%	2.0%	1%	4.0%	13%	18.8%	56%	43.6%	26%	31.7%

Notes: Percentages may not total 100 due to rounding.

ALLENDALE AND STATE COMPARISON SPRING 2016 PARCC ADMINISTRATION ENGLISH LANGUAGE ARTS/LITERACY

	Not Yet Meeting Expectations (Level 1)		Partially Meeting Expectations (Level 2)		Approaching Expectations (Level 3)		Meeting Expectations (Level 4)		Exceeding Expectations (Level 5)	
	State	Allendale	State	Allendale	State	Allendale	State	Allendale	State	Allendale
Grade 3	13.5%	1.1%	16.0%	8.8%	23.0%	13.2%	41.3%	52.7%	6.2%	24.2%
Grade 4	8.2%	2.0%	13.5%	4.1%	24.8%	11.2%	40.8%	43.9%	12.7%	38.8%
Grade 5	6.7%	.9%	14.7%	.9%	25.3%	20.0%	46.4%	63.5%	6.9%	14.8%
Grade 6	7.5%	1.0%	14.1%	2.9%	26.2%	5.9%	41.3%	43.1%	11.0%	47.1%
Grade 7	14.5%	.9%	12.5%	5.4%	21.6%	10.7%	35.6%	42.9%	20.7%	40.2%
Grade 8	10.1%	2.0%	13.0%	4.0%	21.7%	18.8%	40.7%	43.6%	14.5%	31.7%

Notes: Percentages may not total 100 due to rounding.

ALLENDALE AND STATE COMPARISON
 SPRING 2016 PARCC ADMINISTRATION
 ENGLISH LANGUAGE ARTS/LITERACY
 Meeting Expectations

	District % \geq Level 4	State % \geq Level 4
Grade 3	76.9%	47.5%
Grade 4	82.7%	53.5%
Grade 5	78.3%	50.3%
Grade 6	90.2%	53.3%
Grade 7	83.1%	56.3%
Grade 8	75.3%	55.2%

ALLENDALE'S
2016 SPRING PARCC ADMINISTRATION
SPECIAL EDUCATION
ENGLISH LANGUAGE ARTS/LITERACY

	Not Yet Meeting (Level 1)	Partially Meeting (Level 2)	Approaching Expectations (Level 3)	Meeting Expectations (Level 4)	Exceeding Expectation (Level 5)	District % ≥ Level 4
Grade 3	11.1% (1)	22.2% (2)	22.2% (2)	22.2% (2)	22.2% (2)	44.4%
Grade 4	6.7% (1)	13.3% (2)	20.0% (3)	53.3% (8)	6.7% (1)	60.0%
Grade 5	0%	7.1% (1)	28.6% (4)	50.0% (7)	14.3% (2)	64.3%
Grade 6	7.7% (1)	23.1% (3)	23.1% (3)	38.5% (5)	7.7% (1)	46.2%
Grade 7	0%	0%	16.7% (2)	75.0% (9)	8.3% (1)	83.3%
Grade 8	0%	20.0% (2)	50.0% (5)	20.0% (2)	10.0% (1)	30.0%

COMPARISON OF ALLENDALE'S SPRING 2015 AND SPRING 2016 PARCC ADMINISTRATIONS MATHEMATICS

	Not Yet Meeting Expectations (Level 1)		Partially Meeting Expectations (Level 2)		Approaching Expectations (Level 3)		Meeting Expectations (Level 4)		Exceeding Expectations (Level 5)	
	2015	2016	2015	2016	2015	2016	2015	2016	2015	2016
Grade 3	1%	0%	6%	5.4%	15%	17.4%	55%	37.0%	23%	40.2%
Grade 4	0%	0%	2%	3.0%	20%	14.1%	70%	59.6%	8%	23.2%
Grade 5	1%	0.9%	3%	1.7%	16%	11.3%	51%	60.0%	28%	26.1%
Grade 6	1%	2.0%	3%	2.0%	20%	17.6%	67%	39.2%	9%	39.2%
Grade 7	0%	0.9%	5%	9.2%	27%	22.9%	54%	55.0%	14%	11.9%
Grade 8*	0%	6.1%	13%	15.2%	44%	24.2%	44%	51.5%	0%	3.0%
Algebra I	0%	0%	2%	1.4%	3%	0%	73%	60.6%	22%	38.0%

*Some students in grade 8 participated in the PARCC Algebra I assessment in place of the 8th grade Math assessment. Thus, PARCC Math 8 outcomes are not representative of grade 8 performance as a whole.

Notes: Percentages may not total 100 due to rounding.

ALLENDALE AND STATE COMPARISON SPRING 2016 PARCC ADMINISTRATION MATHEMATICS

	Not Yet Meeting Expectations (Level 1)		Partially Meeting Expectations (Level 2)		Approaching Expectations (Level 3)		Meeting Expectations (Level 4)		Exceeding Expectations (Level 5)	
	State	Allendale	State	Allendale	State	Allendale	State	Allendale	State	Allendale
Grade 3	8.1%	0%	15.9%	5.4%	24.3%	17.4%	39.0%	37.0%	12.7%	40.2%
Grade 4	8.0%	0%	18.6%	3.0%	26.8%	14.1%	41.2%	59.6%	5.4%	23.2%
Grade 5	6.2%	0.9%	18.3%	1.7%	28.2%	11.3%	38.4%	60.0%	8.8%	26.1%
Grade 6	8.9%	2.0%	19.1%	2.0%	29.1%	17.6%	35.6%	39.2%	7.3%	39.2%
Grade 7	9.0%	0.9%	20.1%	9.2%	32.3%	22.9%	33.5%	55.0%	5.2%	11.9%
Grade 8*	21.5%	6.1%	25.3%	15.2%	27.5%	24.2%	24.9%	51.5%	.7%	3.0%
Algebra I	12.8%	0%	21.3%	1.4%	24.8%	0%	37.3%	60.6%	3.9%	38.0%

*Some students in grade 8 participated in the PARCC Algebra I assessment in place of the 8th grade Math assessment. Thus, PARCC Math 8 outcomes are not representative of grade 8 performance as a whole.

Notes: Percentages may not total 100 due to rounding.

ALLENDALE AND STATE COMPARISON
 SPRING 2016 PARCC ADMINISTRATION
 Mathematics
 Meeting Expectations

Grade	District % \geq Level 4	State % \geq Level 4
Grade 3	77.2%	51.7%
Grade 4	82.8%	46.6%
Grade 5	86.1%	47.2%
Grade 6	78.4%	42.9%
Grade 7	66.9%	38.7%
Grade 8	54.5%	25.6%
Algebra I	98.6%	41.2%

ALLENDALE'S 2016 SPRING PARCC ADMINISTRATION SPECIAL EDUCATION MATHEMATICS

	Not Yet Meeting (Level 1)	Partially Meeting (Level 2)	Approaching Expectations (Level 3)	Meeting Expectations (Level 4)	Exceeding Expectation (Level 5)	District % >= Level 4
Grade 3	0%	33.3% (3)	22.2% (2)	11.1% (1)	33.3% (3)	44.4%
Grade 4	0%	6.7% (1)	33.3% (5)	53.3% (8)	6.7% (1)	60.0%
Grade 5	7.1% (1)	14.3% (2)	14.3% (2)	50.0% (7)	14.3% (2)	64.3%
Grade 6	15.4% (2)	7.7% (1)	46.2% (6)	15.4% (2)	15.4% (2)	30.8%
Grade 7	0%	30.8% (4)	23.1% (3)	46.2% (6)	0%	46.2%
Grade 8	0%	33.3% (3)	22.2% (2)	44.4% (4)	0%	44.4%

COMPARISON OF ALLENDALE'S
TEST REFUSALS
2015 AND 2016 PARCC ADMINISTRATIONS

2015	2016	Difference
90	14	76

2016 NJ ASK Science Administration Allendale & State Comparison

Comparison	Partially Proficient	Proficient	Advanced Proficient	Total Proficiency
Allendale [4]	4.0%	21.2%	74.7%	95.9%
State [4]	10.2%	40.8%	49.0%	89.8%
Allendale [8]	11.9%	33.0%	55.0%	88.0%
State [8]	27.1%	46.6%	26.3%	72.9%

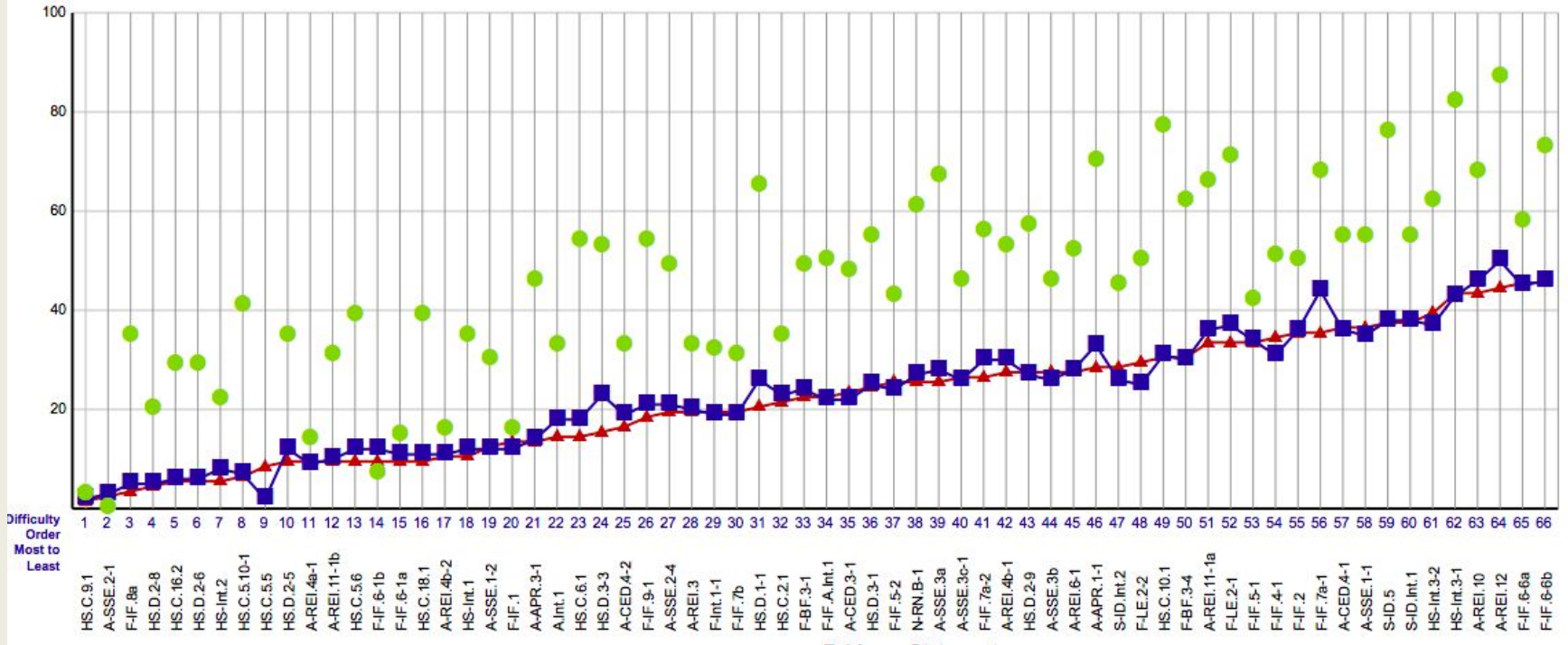
2016 NJASK SCIENCE ADMINISTRATION
SPECIAL EDUCATION
ALLENDALE AND STATE COMPARISON

Grade/ Subject	Partially Proficient	Proficient	Advanced Proficiency	Total Proficiency Allendale	Total Proficiency State
4th Science	2.4%	18.3%	79.3%	97.6%	77.9%
8th Science	9.4%	30.2%	60.4%	90.6%	69.2%

Data Reports



Purpose: This report presents the average percent correct by item for district, state and PARCC.



QUESTIONS TO GUIDE DATA REFLECTION

- How will we use PARCC data to identify strengths and gaps that exist in our curriculum and instruction?
- How will we use PARCC data as a tool to address areas in need of improvement or enhancement?
- How can we provide additional resources and support for our educators to meet the learning needs of all our students?

RESOURCES FOR PARENTS

- Information on the new 2015-16 PARCC Student Reports: www.state.nj.us/education/assessment/parcc/scores/
- Understanding the student score reports (with translations): understandthescore.org/

